

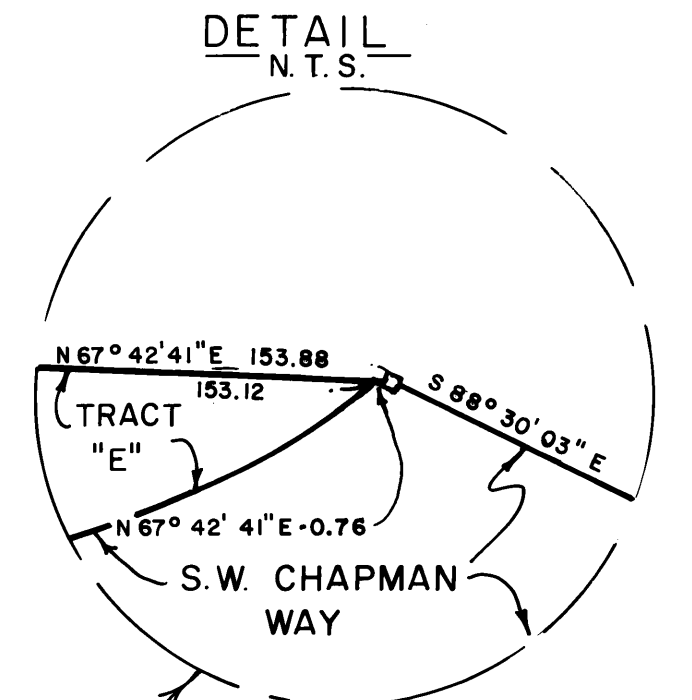
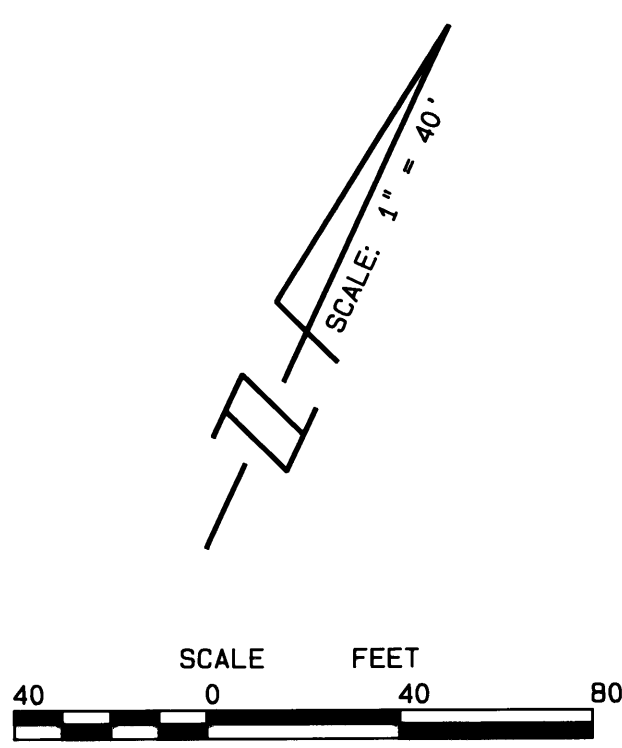
PLAT NO. 40

BEING A PORTION OF PARCEL NO. 29

MARTIN DOWNS P.U.D.

BEING A REPLAT OF A PORTION OF RIVERVIEW SUBDIVISION AS RECORDED IN PLAT BOOK 5, PAGE 1 OF THE PUBLIC RECORDS OF PALM BEACH (NOW MARTIN) COUNTY, FLORIDA; AND A PART OF GOVERNMENT LOT 1, SECTION 7, TOWNSHIP 38 SOUTH, RANGE 41 EAST, ALL LYING IN SECTIONS 7 AND 8, TOWNSHIP 38 SOUTH, RANGE 41 EAST, MARTIN COUNTY, FLORIDA

OCTOBER, 1988



I, MARSHA STILLER, CLERK OF THE CIRCUIT COURT OF MARTIN COUNTY, FLORIDA, HEREBY CERTIFY THAT THIS PLAT WAS FILED FOR RECORD IN PLAT BOOK 11, PAGE 67, MARTIN COUNTY, FLORIDA, PUBLIC RECORDS, THIS _____ DAY OF _____, 198__.

MARSHA STILLER, CLERK
CIRCUIT COURT
MARTIN COUNTY, FLORIDA.

BY _____
DEPUTY CLERK

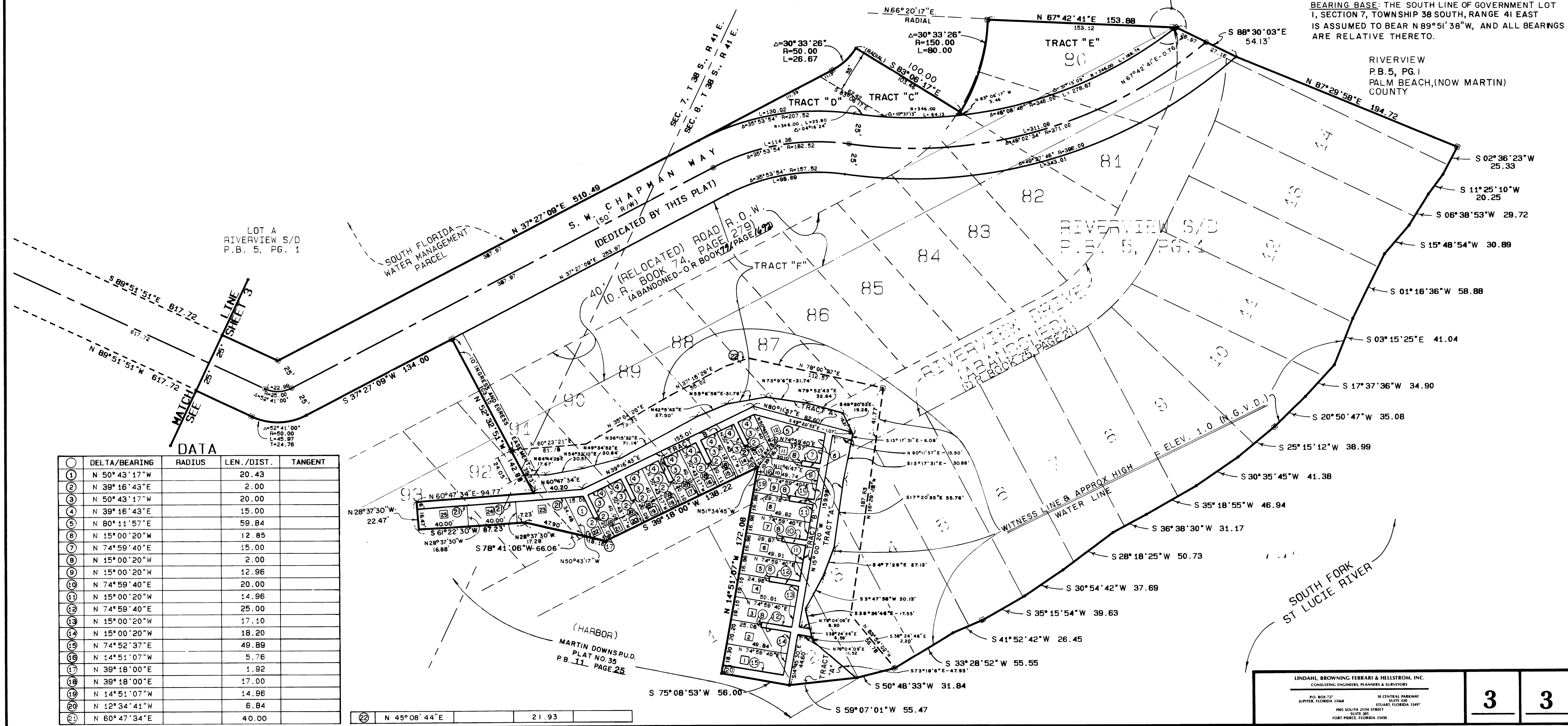
FILE NO. _____

(CIRCUIT COURT SEAL)

- LEGEND:
- - DENOTES P.R.M. (PERMANENT REFERENCE MONUMENT) SET
 - ⊙ - DENOTES P.C.P. (PERMANENT CONTROL POINT)
 - - DENOTES P.R.M. (PERMANENT REFERENCE MONUMENT) FOUND
 - ① - DENOTES LOT NUMBER

BEARING BASE: THE SOUTH LINE OF GOVERNMENT LOT 1, SECTION 7, TOWNSHIP 38 SOUTH, RANGE 41 EAST IS ASSUMED TO BEAR N 89° 51' 38" W, AND ALL BEARINGS ARE RELATIVE THERETO.

RIVERVIEW
P.B. 5, PG. 1
PALM BEACH, (NOW MARTIN)
COUNTY



DATA

DELTA/BEARING	RADIUS	LEN./DIST.	TANGENT
1 N 50° 43' 17" W		20.43	
2 N 39° 16' 43" E		2.00	
3 N 50° 43' 17" W		20.00	
4 N 39° 16' 43" E		15.00	
5 N 80° 11' 57" E		59.84	
6 N 15° 00' 20" W		12.85	
7 N 74° 59' 40" E		15.00	
8 N 15° 00' 20" W		2.00	
9 N 15° 00' 20" W		12.96	
10 N 74° 59' 40" E		20.00	
11 N 15° 00' 20" W		14.96	
12 N 74° 59' 40" E		25.00	
13 N 15° 00' 20" W		17.10	
14 N 15° 00' 20" W		18.20	
15 N 74° 52' 37" E		49.89	
16 N 14° 51' 07" W		5.76	
17 N 39° 18' 00" E		1.92	
18 N 39° 18' 00" E		17.00	
19 N 14° 51' 07" W		14.96	
20 N 12° 34' 41" W		6.84	
21 N 60° 47' 34" E		40.00	
22 N 45° 08' 44" E		21.93	

LINDAHL, BROWNING, FERRARI & HELLSTROM, INC.
CONSULTING ENGINEERS, PLANNERS & SURVEYORS

REG. OFFICE: 727 JUPITER, FLORIDA 33408
FIELD OFFICE: SUITE 305, 7965 SOUTH 25TH STREET, FORT PIERCE, FLORIDA 34949

W. CENTRAL PARKWAY, SUITE 428, ST. LUCIE, FLORIDA 33487

3 3